

COLAMY

Model No.: XK / XK01

Product on the Cover only for reference.


 colamyhome.com

 support@colamyhome.com

 +1(888) 886-1743

PLEASE NOTE THAT COLAMY IS NOT LIABLE FOR ANY DAMAGES OR INJURIES RESULTING FROM IMPROPER ASSEMBLY OR USAGE OF THE PRODUCT, OR FAILURE TO FOLLOW THE PROVIDED ASSEMBLY INSTRUCTIONS CORRECTLY.



 ASSEMBLY VIDEO



CONTENTS

01	INTRODUCTION	Pg 03
02	SAFETY INFORMATION	Pg 05
03	ASSEMBLY INSTRUCTIONS	Pg 06
04	ADJUSTMENT INSTRUCTIONS	Pg 10
05	MAINTENANCE INSTRUCTIONS	Pg 15
06	LIMITED WARRANTY	Pg 16
07	CUSTOMER SERVICE & ONLINE INSTRUCTIONS	Pg 18

01 INTRODUCTION

COLAMY

COLAMY is a furniture company that specializes in creating comfortable chairs for daily use. Our founder has extensive knowledge and experience in the chair industry, having worked with various manufacturers to produce a range of office chairs. He established COLAMY in 2019 to provide high-quality chairs that prioritize comfort and affordability.

With a persistent focus on development and growth, COLAMY expanded its product line in 2021, adding dining chairs, living room chairs, and recliners to our offerings. The company's attention to detail is evident in our commitment to selecting the best fabric for each chair and spending months perfecting the armrests to ensure maximum sturdiness and stability.

COLAMY's mission is to provide comfortable seating options that everyone can afford, regardless of their background or budget. Our team consists of individuals from diverse backgrounds who share the common goal of creating affordable, comfortable seating options for all. The positive feedback from customers fuels our passion for creating the best chairs possible.

In a world where prolonged sitting is becoming increasingly common, COLAMY stands out as a company that prioritizes comfort and health. By providing a range of affordable and comfortable seating options, COLAMY aims to make daily life more comfortable and enjoyable for everyone.

01 INTRODUCTION

COLAMY ergonomic office chair Model XK, also named Atlas, is designed with your unique needs in mind. Our chair boasts an impressive range of adjustable features, allowing for a truly customized seating experience. With the ability to adjust the angle and height of the headrest, as well as the height and depth of the seat cushion, you can tailor your sitting position to your exact specifications. Additionally, our chair offers adjustable recline angle and tension, along with 4D armrests, providing even greater comfort and support.

Crafted with durable, high-strength mesh fabric and a supportive seat cushion, Model XK - Atlas is both comfortable and long-lasting. The sturdy metal legs ensure stability and durability for extended use, making it the perfect choice for both home and office settings. Designed to promote healthy sitting posture during long hours in front of a computer, Model XK - Atlas is the ideal choice for those who value both comfort and health.

Gabriel®



02 SAFETY INFORMATION

▲ WARNING

 PLEASE READ THE INSTRUCTIONS CAREFULLY AND FOLLOW THE ASSEMBLY STEPS.

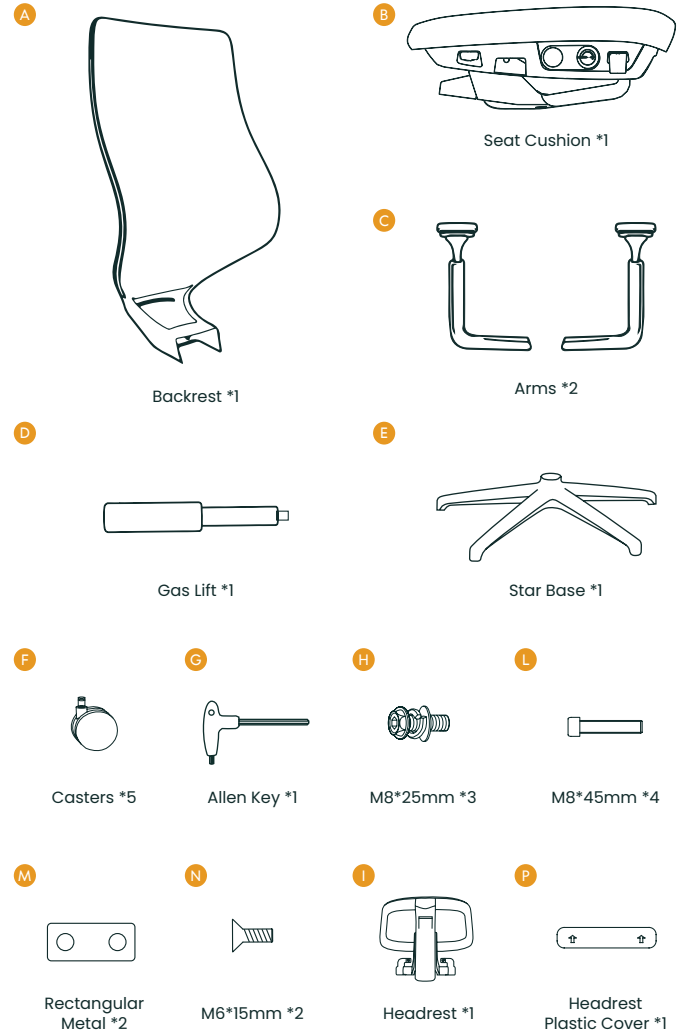
1. To ensure proper assembly, please follow all steps and use all parts provided. Not following this warning may result in serious injury to you or others.
2. To prevent misalignments, keep the screws loose and do not tighten them until they are all in their correct positions.
3. Avoid overtightening or forcing the screws, as this could cause them to break, strip, or damage the threads of the holes.
4. Using the wrong size of screws for a particular part could cause damage to the screw or the part.
5. Please lubricate all moving parts regularly and tighten all bolts and screws every 6 months, or as needed.

▲ SAFETY INFORMATION

WEIGHT CAPACITY FOR SEATING: 300 LBS

 <p>Sit in the center of the chair with your back against the backrest</p>	 <p>Do not sit at the front edge of the chair</p>	 <p>Do not stand on the chair</p>	 <p>Do not use the chair with more than one person</p>
	 <p>Do not push the chair around when a person is sitting in it</p>	 <p>Do not push down on the backrest when a person is reclined</p>	 <p>Do not place all your weight on the backrest only</p>

03 ASSEMBLY INSTRUCTIONS



PLEASE MAKE SURE ALL THE PARTS ARE INCLUDED.

MISSING PARTS?
support@colamyhome.com

03 ASSEMBLY INSTRUCTIONS

BEFORE YOU GET STARTED, A FEW POINTERS:

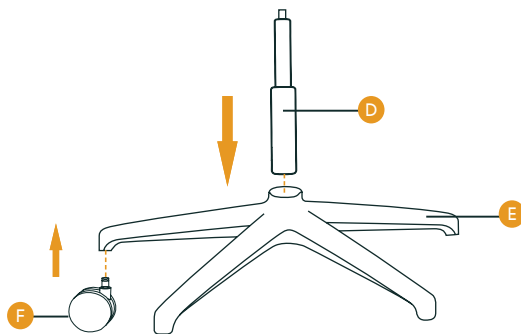


Having a friend to help makes assembly extra-easy



Mind the important safety information

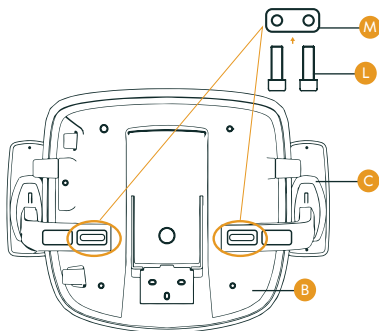
- Step 1** Turn the Star Base(E) upside down, then press the Casters(F) into the holes at the end of each base leg. Insert the Gas Lift(D) into the center hole of the Star Base(E).



- Step 2** Attach TWO Arms(C) to the Seat Cushion(B). Place each Rectangular Metal(M) over TWO M8*45mm Bolts(L), using the Allen Key(G).

NOTE 1: Arms are labeled with an "L" (left) or "R" (right) to show which sides they should be placed on.

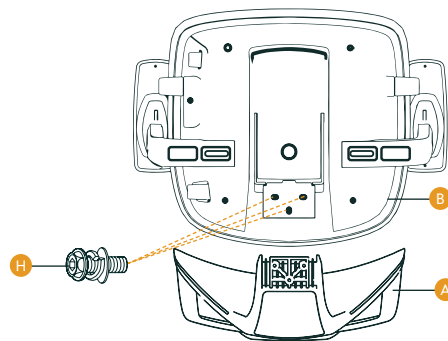
NOTE 2: Tight the four bolts to 70% at first, make sure it have space to adjust, then tight all the bolts 100%.



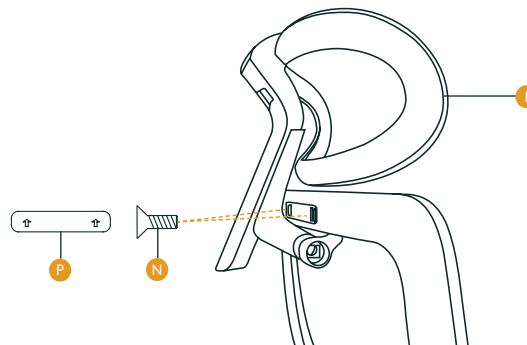
03 ASSEMBLY INSTRUCTIONS

- Step 3** Attach the Backrest(A) and Seat Cushion(B) with THREE M8*25mm Bolts(H), Align the three holes of the backrest steel plate with the screw holes of the mechanism at the bottom of the Seat Cushion, tighten all the bolts with the Allen Key.

NOTE: Tight the four bolts to 70% at first, make sure it have space to adjust, then tight all the bolts 100%.

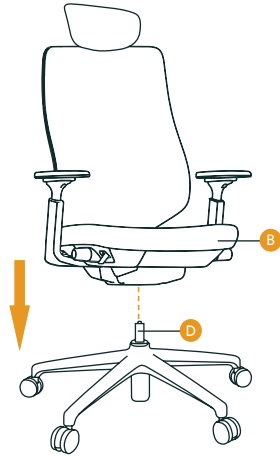


- Step 4** Install the Headrest(I) onto the backrest. Align the screw holes, use M6*15mm Bolts(N), tighten with Allen Key, and press the Headrest Plastic Cover(P).



03 ASSEMBLY INSTRUCTIONS

Step 5 Push the Seat Cushion(B) down onto the Gas Lift(D) firmly until the connection is secure.



Step 6 Now, your chair is successfully installed.



04 ADJUSTMENT INSTRUCTIONS

Seat Height Adjustment: Paddle-shaped lever on the right front side while seated



To raise:
While taking your weight off the chair, lift the lever up.

To lower:
While seated, lift the lever up.

• NOTE: Please make sure that your feet rest flat on the floor to get a proper height.

Seat Depth Adjustment: The knob on the left side



To unlock adjustment:
While seated, pull out the knob

To lockdown adjustment:
While seated, push the knob in

To move the seat in

To move the seat out

• NOTE: Please make sure that your whole back is supported in the chair and leave 2-4 of your fingers' distance between the back of your knee in front of the chair to get a proper position.

04 ADJUSTMENT INSTRUCTIONS

Tilt Tension Adjustment: The knob on the right side



To increase tension:

While seated, turn the knob forward (toward + sign).

To decrease tension:

While seated, turn the knob backward (toward - sign).

- NOTE: Please make sure that your whole back is supported in the chair and leave 2-4 of your fingers' distance between the back of your knee in front of the chair to get a proper position.

04 ADJUSTMENT INSTRUCTIONS

Arm Height Adjustment: The button under the armrest (Up and Down)



To raise or lower the armrest:

While seated, press the button to unlock and grasp the base of the arm support to raise or lower them to the desired height. Release the button to lock.

- NOTE: Please make sure that your arms contact the arm pad without any lift at your shoulders for maximum comfort.

Tilt Lock Adjustment: The paddle-shaped lever on the right back side while seated



To unlock the backrest:

The backrest will stay upright for adjustment.



To lockdown:

While leaning back at the desired reclined position.

- NOTE: Please weigh your back on the backrest maximally if the backrest doesn't stay upright when it's unlocked.

Arm Depth Adjustment: Front of each armrest (In and Out)



To move armrests forward and backward:

Grasp the end of the arm pad and slide them forwards or backward.

04 ADJUSTMENT INSTRUCTIONS

Arm Width Adjustment: Front of each armrest
(Side to Side)



❖❖❖ **To slide the armrests left or right:**

While seated, hold the armrest panel with your hand and push it left and right

- NOTE: Adjusting the width of your armrests may help relax the muscles in your shoulders, neck, arms, and hands. To achieve a good width for you, adjust the armrests so that your elbows are directly under your shoulders.

04 ADJUSTMENT INSTRUCTIONS

Lumbar Support Adjustment: On the back side of the backrest



❖❖❖ **To change lumbar support height:**

While seated, using equal pressure on each end of the lumbar support, raise or lower it to the desired position within adjustment track.

- NOTE: The goal of this function is to find where that lumbar part is most comfortable in support of your back.

Armrest Angle Adjustment: Front of each armrest
(Swivel)



❖❖❖ **To swivel the armrest left or right at a limited angle:**

While seated, hold the armrest panel with your hand and pivot them to the left and right

- NOTE: Adjusting the armrest angle can help support different types of task and shift in postures. Swiveling the chair arms inwards for support while using the keyboard and swiveling them out to support the use of the computer mouse.

Headrest Height Adjustment: The ratchet headrest on the top of the chair
(In and Out)



❖❖❖ **To raise or lower the headrest:**

Take your hand to raise the handle of the headrest, it will ratchet up. When it gets all the way to the top, it can go to the bottom, then you can raise the headrest to the desired position within the adjustment track.

04 ADJUSTMENT INSTRUCTIONS

Headrest Angle Adjustment:



To change the headrest angle:
While seated, simply rotate the headrest to the angle that you feel most comfortable.

- NOTE: Proper headrest angle will help prevent whiplash by reducing the distance between the back of the head and the head restraint, stopping the neck from bending back.

05 MAINTENANCE INSTRUCTIONS



Stains may be removed with a mild soap solution and a damp cloth.



Dust and pick up spills using a clean, non-colored, lint-free cloth.



Do not put hot items directly on the furniture surface.



For indoor use only. Do not place furniture outside.



Do not place furniture in direct sunlight.



Do not write on the furniture surface without a padded barrier to protect it.



Do not clean furniture with harsh cleaners or polishes.



Do not place furniture near heating or cooling vents.

06 LIMITED WARRANTY

COLAMY promises to repair or replace any COLAMY chair that is found to be defective in material or workmanship within three years from the date of original purchase so long as you, the original purchaser, still owns it. This is your sole and exclusive remedy. This warranty is subject to the provisions below.

EXCLUSIONS

This warranty does not apply and no other warranty applies to:

- Normal wear and tear, which are to be expected over the course of ownership.
- Misuse, abuse, or excessive use of the product.
- Modifications or attachments to the product that are not approved by COLAMY.
- Products that were not installed, used, or maintained in accordance with product instructions and warnings.
- Products used for rental purposes or unauthorized retail activities.

Seating Usage: Normal use for seating is identified as the equivalent of a single shift, forty- (40) hour workweek. To the extent that a seating product is used in a manner exceeding this, the applicable warranty period will be reduced in a pro-rata manner.

RETURN POLICY

We adopt a 30-day return policy which means that all products purchased on this website may be returned to us within the timeframe. You need to contact us within 30 days after the product(s) came into your possession and the product(s) must be returned to us without any undue delays.

Returned products must be returned in the same condition as they were sent and they must be sent in their original packaging.

If the product is not faulty, (i.e. if you changed your mind or if you are unhappy with the product for some other reason), the cost of shipping will fall on you. And it is your responsibility that the package arrives safely to us so we recommend that you use a courier service where it is possible to track the shipment.

If the product is faulty when you receive it, please contact us and we will help you out.

We reserve the right to give a partial refund in cases when the product(s) is not in an unused condition, is damaged or has missing parts, not due to our error.

06 LIMITED WARRANTY

HOW RETURNS WORK

To request a return, please fill out the contact form on our website and attach a copy of your invoice as proof of purchase and the reason for your return in the message.

Then we will provide the return address for the product as soon as possible.

Once the returned product has been received by us and inspections have been completed, a specific disposition will be provided to you.

In addition, if the return is approved, the refund amount will be automatically credited to your original payment method.

07 CUSTOMER SERVICE & ONLINE INSTRUCTIONS

Customer Service

support@colamyhome.com

colamyhome.com

+1(888) 886-1743

Online Instructions



Assembly Instructions
Video



Troubleshooting
Videos